

The data presented in the following reports reflect the NNTC central database as of
July 21, 2025

Usage Statement

Distribution of the data contained in this report through publication or presentation should be reported to the Data Coordinating Center. Reporting usage of the NNTC resources helps to ensure continuation of this valuable resource!

The NNTC is directly funded by the NIMH, NIA, NIDA, and NINDS.

Questions regarding these data should be directed to the Data Coordinating Center
The Emmes Company
Rockville, MD
nntc@emmes.com

Suppressed Cohort Overview: PWH

Cohort Enrollment & Study Status

CNS Specimens Available

Peripheral Specimens Available

Fluids Available (%)

Demographics

cART Era Demographics

HIV Characteristics

cART Era Viral Load

Pathological Conditions: Year of Autopsy

Last Psychiatric Diagnosis

Baseline Psychiatric Diagnosis

Cognitive Diagnosis (%)

Change in Cognitive Diagnosis

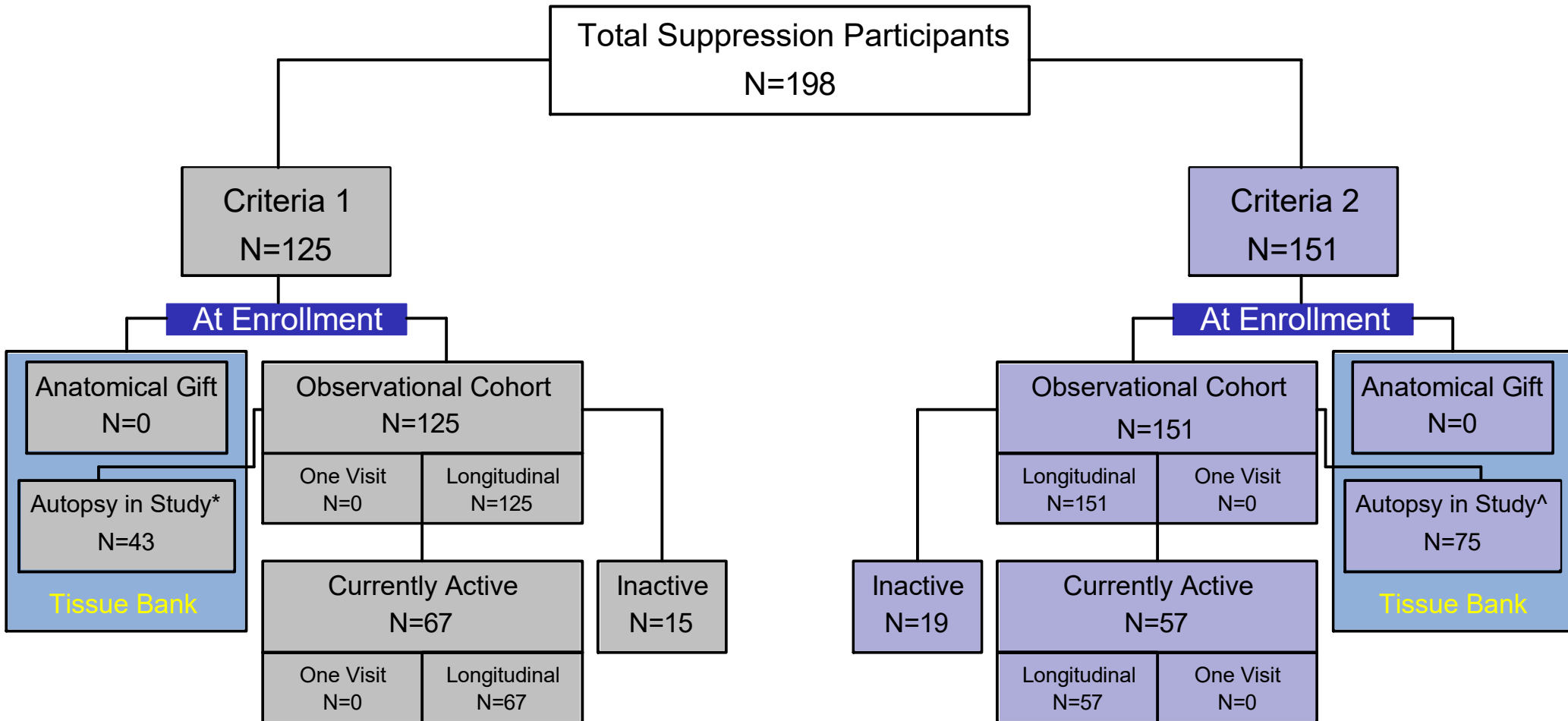
Neurologic Diagnoses

Concomitant Medications

Ancillary Lab Measurements

Suppression Cohort Overview

Suppression Cohort Overview



Total number of suppressed active cases is 86. The total number of suppressed autopsy cases is 85. The total number of suppressed inactive cases is 27.

Criteria 1: Participants have been followed for at least 5 years. There must be at least 1 undetectable viral load within last 1 year, or 2 undetectable viral loads within last 2. Over last 5 year period, there must be at least 4 undetectable viral loads. Note that “blips” of detectable virus are allowed, however these must be <1000 copies/mL during this 5 year period.

Criteria 2: Participants have been followed for at least 2 years. There must be at least 1 undetectable viral load within last 6 months. Note that “blips” of detectable virus are allowed, however these must be <1000 copies/mL during this 2 year period.

Longitudinal Cohort: Participants enrolled with 2 or more study visits.

Tissue Bank: Participants deceased with autopsy.

78 cases meet both criteria. 33 autopsy cases met both criteria.

Inactive cases are either lost to follow-up/administratively censored/withdrawn (N=2) or deceased without autopsy (N=25).

* 0 autopsy cases included in Observational Cohort; 43 autopsy cases included in Longitudinal Cohort.

^ 0 autopsy cases included in Observational Cohort; 75 autopsy cases included in Longitudinal Cohort.

CNS Specimens Available

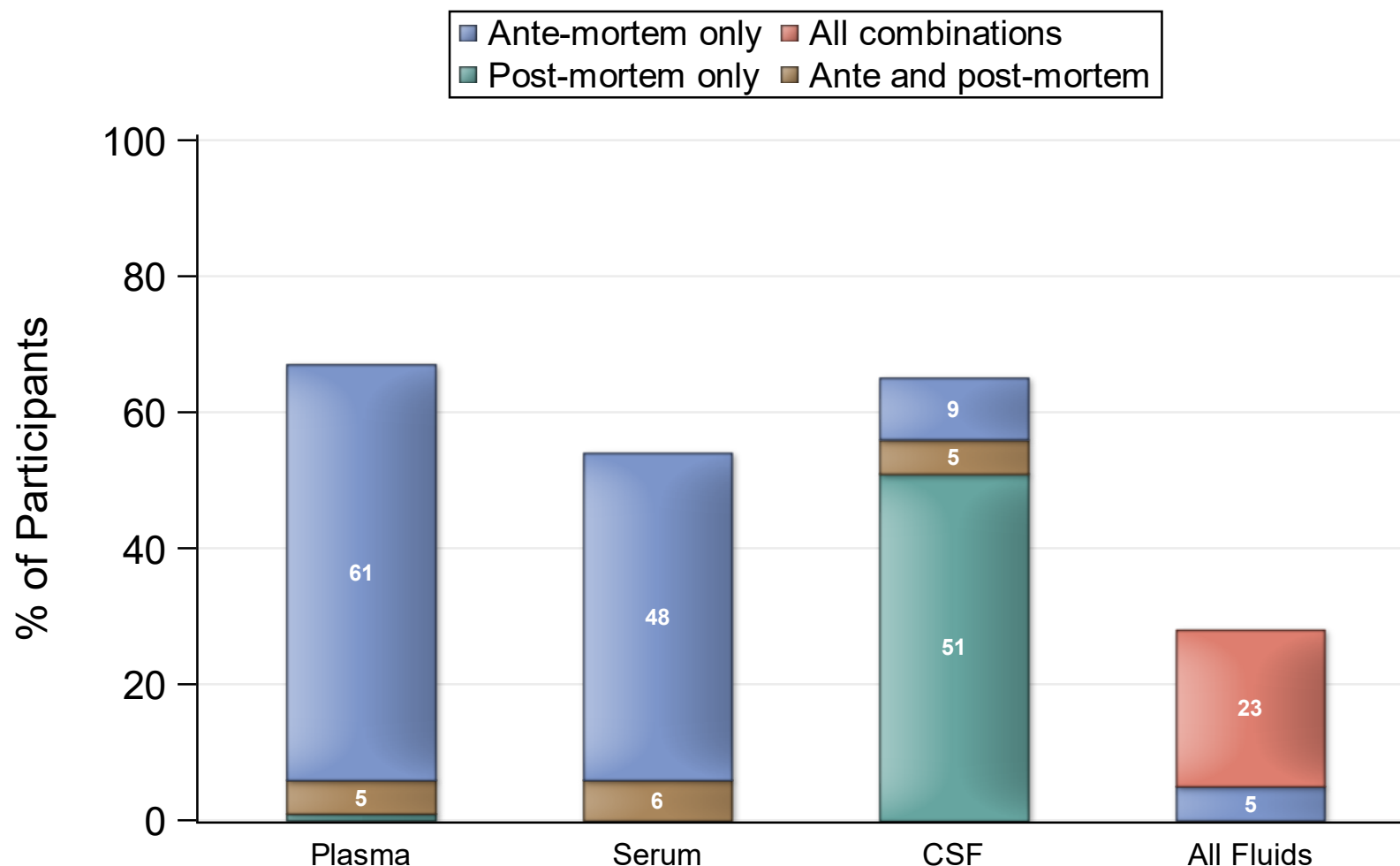
Type:	PWH
Frozen Brain	81
Fixed Brain	77
Spinal Cord	75
Cerebellum	67
Brain Stem	66
Frontal Lobe	65
Parietal Lobe	64
Occipital Lobe	64
Temporal Lobe	64
Thalamus	60
Basal Ganglia	57
Dorsal Root Ganglia	53
Hippocampus	52
Trigeminal Ganglia	24
Occipital Pole	7

*Several of the smaller brain categories listed were approved by the Steering Committee on 27JUN2017 to be reported centrally, and thus are currently underreported in the central inventory as sites work towards retrospectively updating specimen records. It is expected that the central inventory, including availability of these specimens, will continue to be updated prospectively.

Peripheral Organ Specimens Available

Type:	PWH
Heart	77
Liver	76
Spleen	73
Kidney	70
Lung	70
Peripheral Nerve	65
Adipose Tissue	59
Bone Marrow	58
Muscle	58
Lymph Node	53
Bowel	42
Pituitary Gland	32
Testes	29
Hair	4

Available Fluids



*All-combinations (e.g., one specimen might be available ante-mortem while the other two might be ante- and post-mortem or any of the other 23 combinations where all 3 specimen availabilities are not the same).

Please note the totals listed above reflect only those cases who have a fixed brain specimen available and fluids collected within 1 year of death. Percentage labels not shown are 2% or less.

Demographics*

<u>N</u>	<u>78</u>
<u>Age</u>	
Mean	61.3
SD	9.2
25th Percentile	56
Median	60
75th Percentile	67

*Cases with a fixed brain specimen available with a measurement at baseline and within 1 year of death.

Demographics cont.*

	<u>N</u>	<u>%</u>
<u>Sex</u>		
Male	58	74
Female	20	26
<u>Ethnicity</u>		
Hispanic origin	23	29
<u>Race</u>		
White	38	49
Black	31	40
Other	9	12

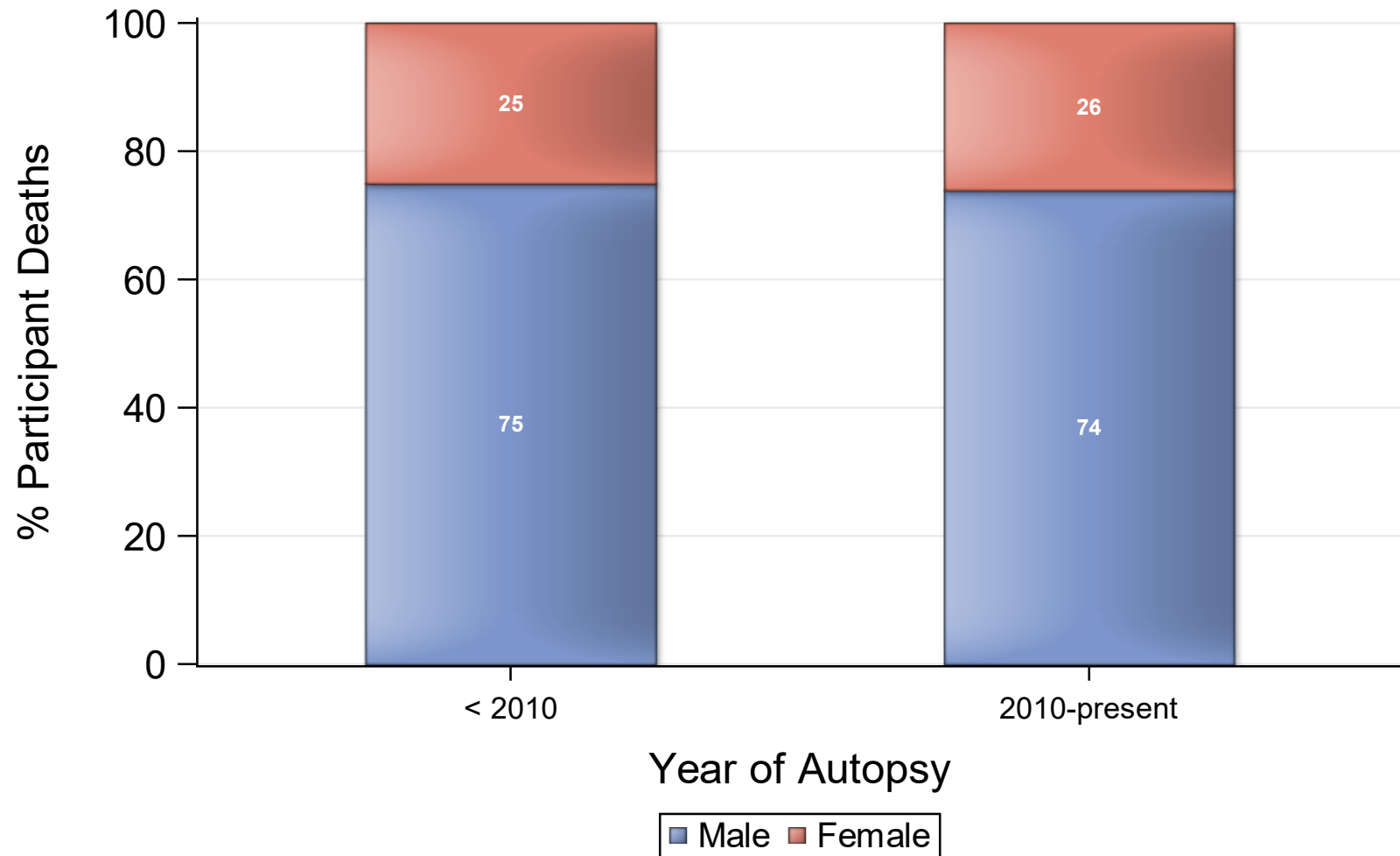
*Cases with a fixed brain specimen available.

Demographics cont.*

	<u>N</u>	<u>%</u>
<u>Furthest Education</u>		
8th grade or less	4	5
Some High School	19	25
High School Gradudate	17	22
Some College/Associate's Degree	25	32
College Graduate	5	6
Advanced Degree work	7	9

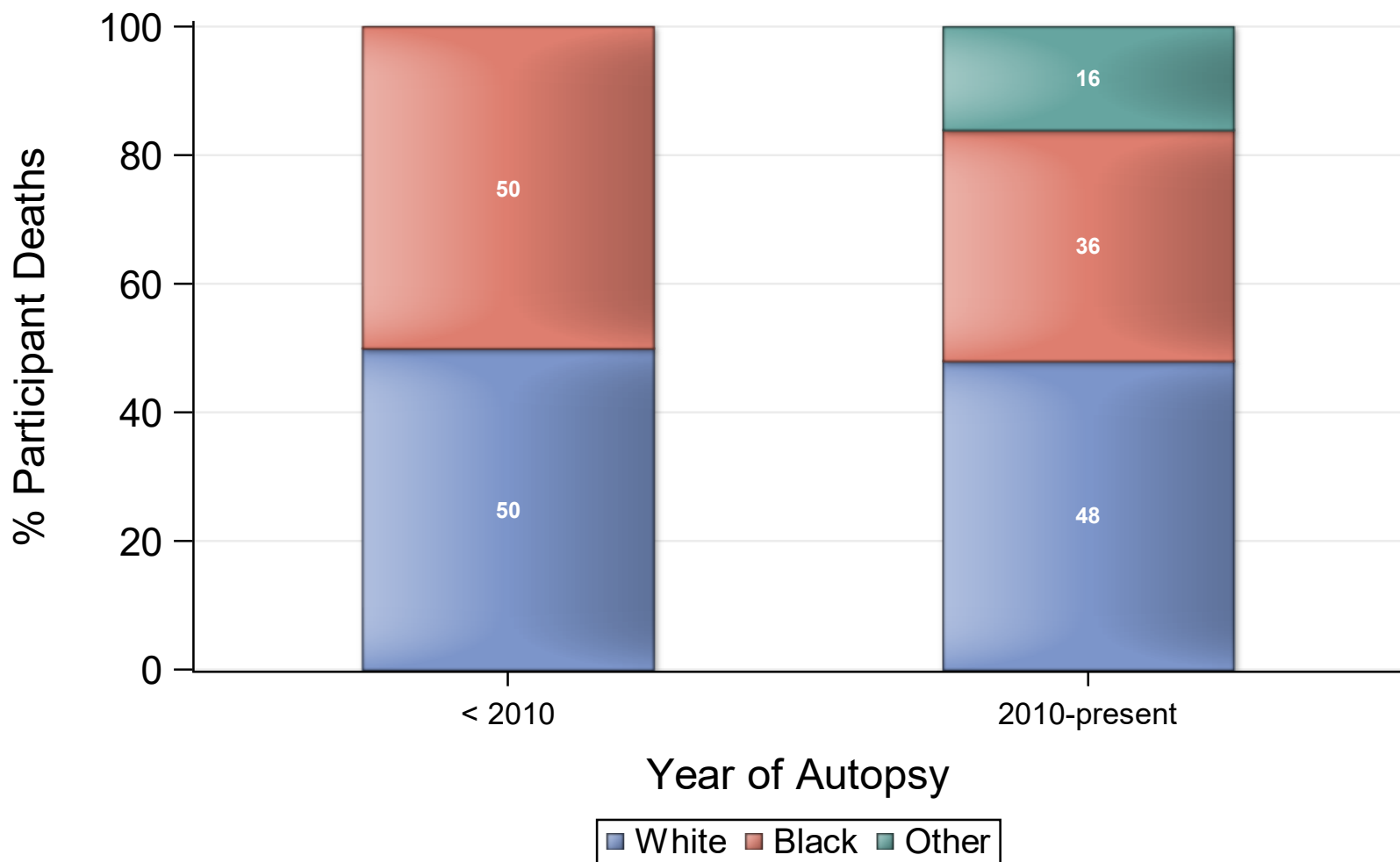
*Cases with a fixed brain specimen available.

cART Era Demographics - Sex



*The NNTC did not collect data before 1998.

cART Era Demographics - Race



*The NNTC did not collect data before 1998.

HIV Characteristics of autopsy cases*

	<u>N</u>	<u>%</u>
<u>Baseline HIV risk</u>		
IV drug use	26	33
Male to male sex	35	45
Heterosexual sex	16	21
Other	1	1
<u>On ART</u>		
at baseline	75	96
at last visit	71	91

*Cases with a fixed brain specimen available.

*HIV Characteristics at time of death**

CD4 Count (cells/mm³, N=70)

25th Percentile	208
Median	369
75th Percentile	559

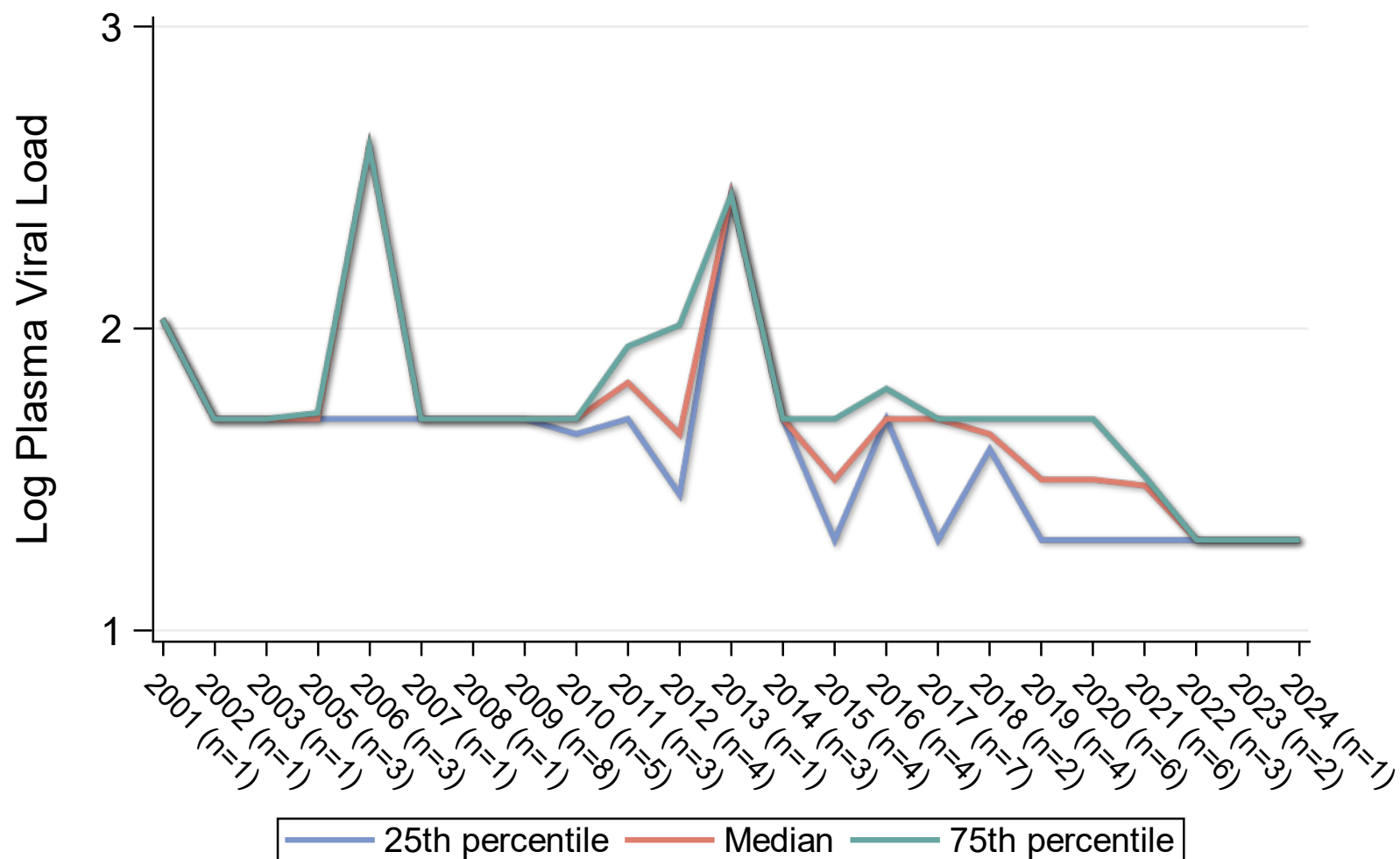
Log Plasma Viral Load* (log10 copies/mL, N=72)

25th Percentile	1.39
Median	1.70
75th Percentile	1.70

*Cases with a fixed brain specimen available with a measurement at baseline and within 1 year of death.

**Among those with known ARV medication status. 3 participants had detectable VL values of 0 where a viral log could not otherwise be calculated.

cART Era Viral Load

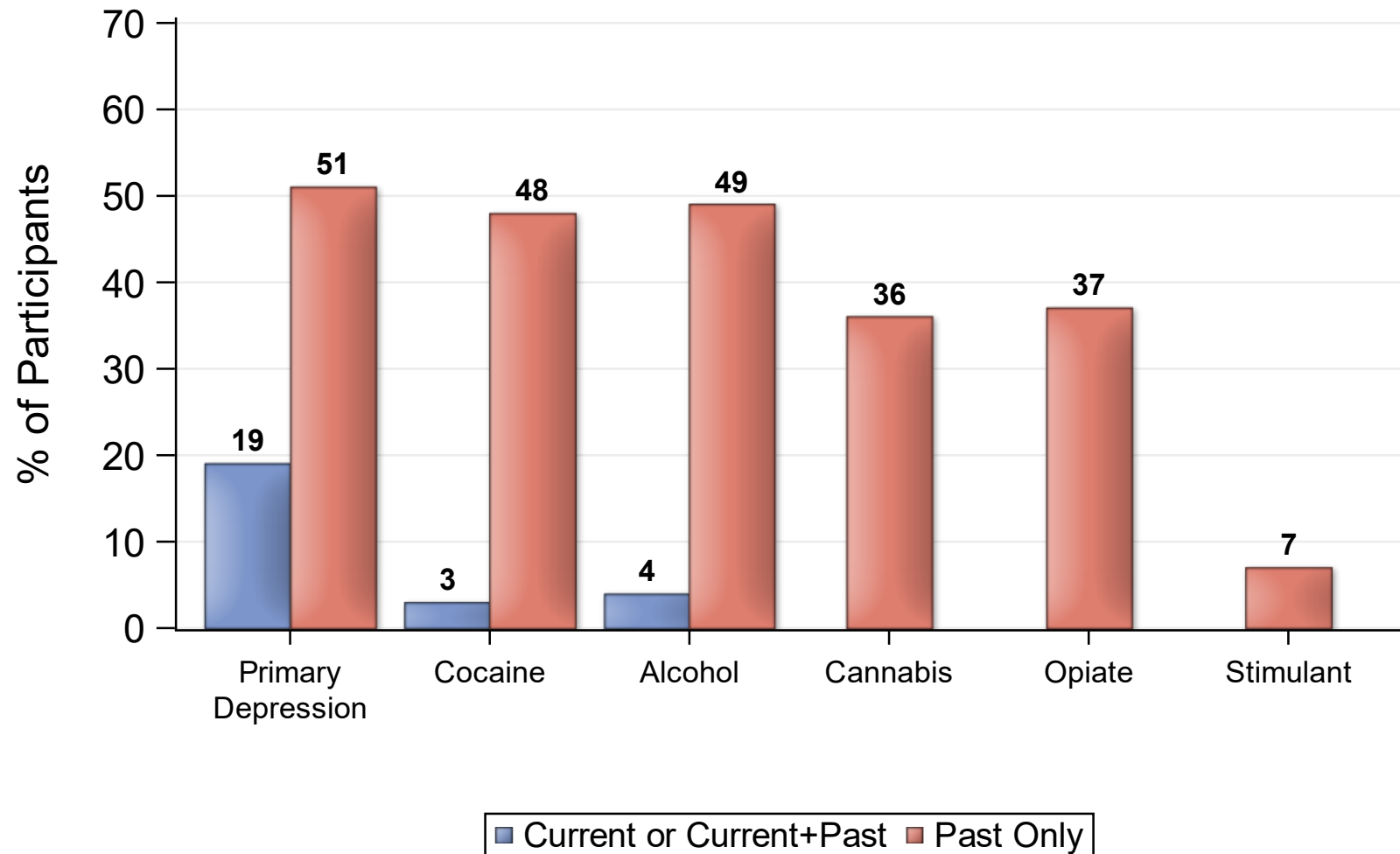


*Among those who have died during the cART era.

Pathological Conditions: Year of Autopsy

	Year of Autopsy		
Type:	< 2010	2010-present	Total Cases
<i>Total Fixed Specimens</i>	19	58	77
Normal/minor neuropath changes	5 (26)	8 (14)	13 (17)
Other non-infectious pathology	6 (32)	30 (53)	36 (47)
Alzheimer's type 2 gliosis	1 (5)	8 (14)	9 (12)
Focal infarct	8 (42)	19 (33)	27 (35)
Hypoxic/ischemic damage	5 (26)	15 (26)	20 (26)
Aseptic Leptomeningitis	2 (11)	9 (16)	11 (14)
Microglial nodule encephalitis	0	1 (2)	1 (1)
Hemorrhage-parenchymal	0	8 (14)	8 (10)
Progressive Multifocal Leukoencephalopathy	0	1 (2)	1 (1)
Other infections	0	3 (5)	3 (4)

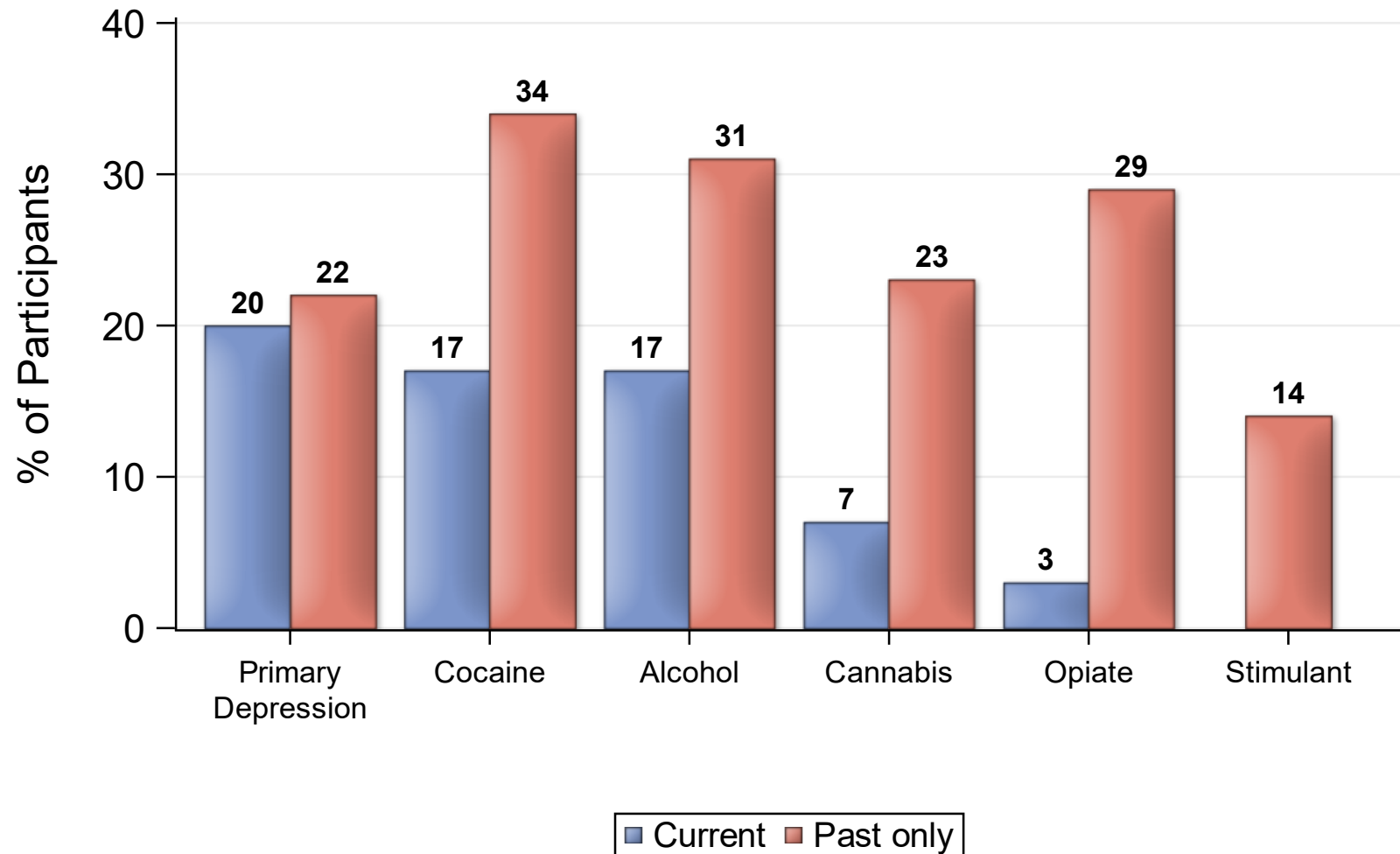
Last Psychiatric Diagnosis



58% are Normal/Test Not Administered

*Please note the totals listed above reflect only those cases who have a fixed brain specimen available and data from the PRISM/CIDI evaluation before death (N=77).

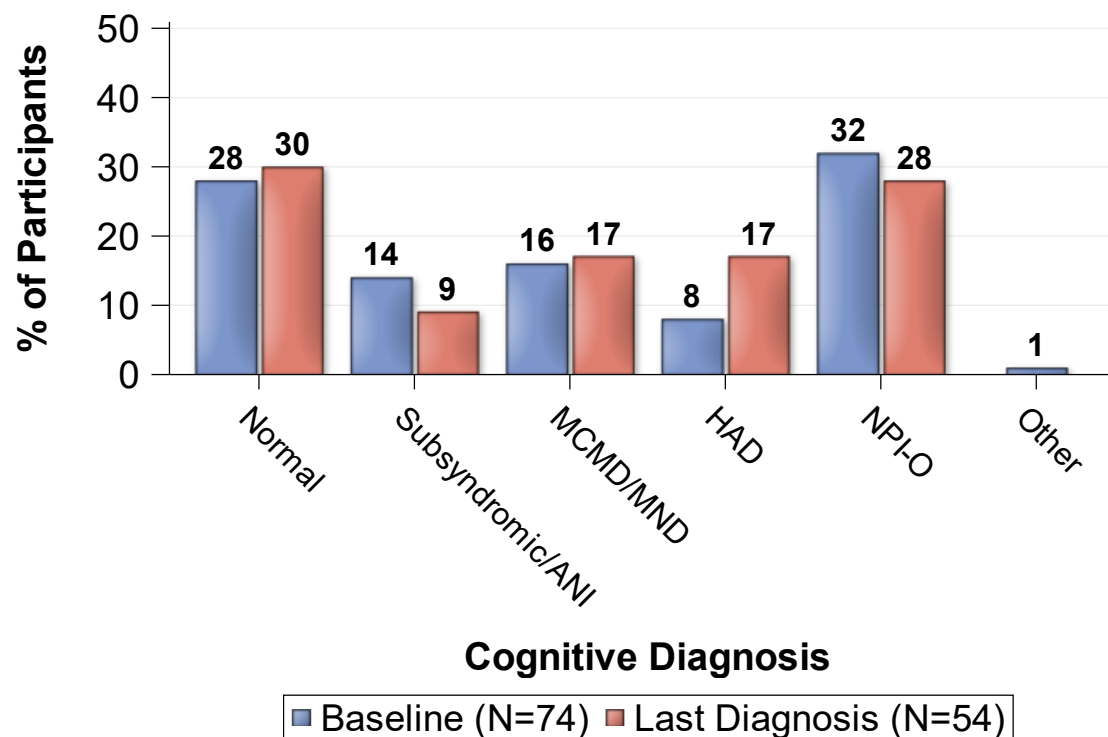
Baseline Psychiatric Diagnosis



16% are Normal/Test Not Administered

*Please note the totals listed above reflect only those cases who have a fixed brain specimen available and data from the PRISM/CIDI evaluation closest to baseline (N=77).

Cognitive Diagnosis



ANI = Asymptomatic Neurocognitive Impairment

MCMD = Minor Cognitive Motor Disorder

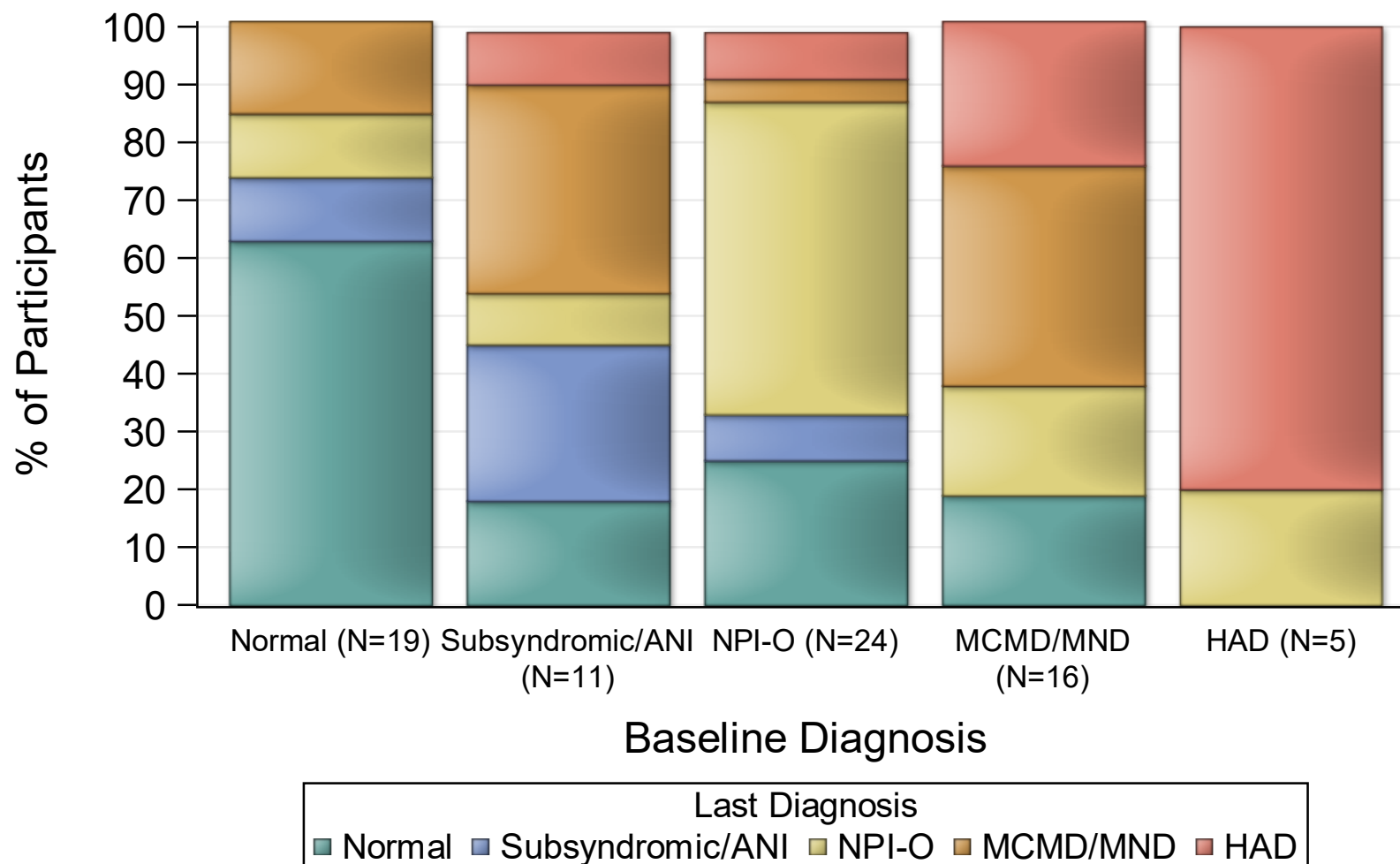
MND = Minor Neurocognitive Disorder

HAD = HIV-Associated Dementia

NPI-O = Neuropsychological Impairment - Other cause, not HIV

*Please note the totals listed above reflect only those cases who have a fixed brain specimen available.

Change in Cognitive Diagnosis



Neurologic Diagnoses*

	<u>Last Dx</u>		<u>Baseline</u>	
	<u>N</u>	<u>%</u>	<u>N</u>	<u>%</u>
<u>Clinical Myelopathy</u>	<u>(N=52)</u>		<u>(N=73)</u>	
HIV associated	4	8	5	7
Other	0	0	2	3
None	48	92	66	90
<u>Neuropathy</u>	<u>(N=46)</u>		<u>(N=62)</u>	
HIV associated DSP	33	72	30	48
HIV/nucleoside	4	9	4	6
None	9	20	28	45

*Cases with a fixed brain specimen available.

Participants Reporting Concomitant Medications

Medication	# of Pts (N=76)	%
Central Nervous System Agents	73	96.1
Cardiovascular Drugs	68	89.5
Gastrointestinal Drugs	68	89.5
Vitamins	65	85.5
Anti-infective Agents	61	80.3
Hormones and Synthetic Substitutes	53	69.7
Electrolytic, Caloric, and Water Balance	51	67.1
Autonomic Drugs	49	64.5
Skin and Mucous Membrane Agents	41	53.9
Blood Formation, Coagulation, and Thrombosis Agents	38	50
Miscellaneous Therapeutic Agents	30	39.5
Antihistamine Drugs	29	38.2
Eye, Ear, Nose, and Throat (EENT) Preparations	29	38.2
Respiratory Tract Agents	22	28.9
Antineoplastic Agents	20	26.3
Local Anesthetics	10	13.2
Pharmaceutical Aids	9	11.8
Serums, Toxoids, and Vaccines	6	7.9
Smooth Muscle Relaxants	6	7.9
No medication use reported on at least one occasion	5	6.6

Ancillary Lab Measurements

Ancillary Lab	Total # records overall	% cohort with at least 1 measure	Total # cases with baseline measure	% cohort with baseline & one other measure
<u>Miscellaneous Hematology</u>				
Red blood cells	296	16	6	8
Mean Corpuscular Hemoglobin (MCH)	293	16	6	8
Mean Corpuscular Volume (MCV)	1373	71	49	64
Mean Corpuscular Hemoglobin Concentration (MCHC)	292	14	6	8
Blood Red cell Distribution Width (RDW)	295	16	6	8
Blood Rapid Plasma Reagin (RPR)	121	48	19	19
Blood Neutrophil Percent	1317	70	49	64
Blood Lymphocyte Percent	1356	70	49	64
Blood Monocyte Percent	1319	70	49	64
Blood Eosinophil Percent	1318	70	49	64
Blood Basophil Percent	1315	70	49	64
Blood Mean Platelet Volume (MPV)	241	12	6	8
Blood CD3 Percent	16	5	2	1
Blood CD3 Absolute	16	5	2	1
<u>Miscellaneous Serology & viral loads</u>				
Blood Hepatitis B Surface Antigens	124	62	36	29
Blood Hepatitis B Surface Antibodies	121	61	32	27
Blood Hepatitis B Core Antibodies	121	64	33	25
Blood Hepatitis B Viral Load	20	10	3	3
Blood Hepatitis C Antibodies (HCV)	148	62	37	30
Blood Hepatitis C Viral Load	81	36	12	13
<u>Miscellaneous Serology & viral loads</u>				
COVID-19 Test Results (qualitative)	31	13	0	0

Ancillary Lab Measurements cont.

Ancillary Lab	Total # records overall	% cohort with at least 1 measure	Total # cases with baseline measure	% cohort with baseline & one other measure
<u>Miscellaneous Blood Chemistries</u>				
Glucose	1307	70	48	62
Hemoglobin A1c	224	49	10	13
Sodium	1237	75	48	62
Calcium	1170	69	46	60
Chloride	1203	75	46	60
Potassium	1219	75	46	60
Total Protein	1000	74	44	57
Alkaline Phosphatase	1000	70	44	57
AST	982	70	42	55
ALT	1005	70	45	58
Total Bilirubin	1043	77	48	62
Direct Bilirubin	84	10	1	1
Creatinine	1234	74	48	62
BUN	1226	74	46	60
CO2	1200	70	45	58
PT	611	65	43	56
INR	612	65	43	56
Urate	22	8	1	0
Triglycerides	361	58	18	22
Cholesterol	361	60	19	23
LDL	329	57	16	19
HDL	341	60	18	21
Phosphorus	122	13	3	3
LDH	28	8	2	1

Ancillary Lab Measurements cont.

Ancillary Lab	Total # records overall	% cohort with at least 1 measure	Total # cases with baseline measure	% cohort with baseline & one other measure
<u>Miscellaneous CSF values</u>				
CSF-VDRL Test	34	5	2	3
<u>Miscellaneous Urine values</u>				
Urinalysis: Glucose	485	62	41	51
Urinalysis: Protein	490	62	41	51
Urinalysis: pH	486	62	41	51
Urinalysis: Specific Gravity	485	62	41	51
Urinalysis: Ketones	484	61	41	51
Urinalysis: Bilirubin	485	62	41	51
Urine Toxicology; Methamphetamine	104	16	8	10
Urinalysis: Red Blood Cells	273	53	23	27
Urinalysis: White Blood Cells	270	53	23	27